

LAFAYETTE DIOCESAN DIRECTORY

(UPDATED THROUGH NOVEMBER 3, 2010)

The Diocese of Lafayette Catholic Directory is maintained by the office of the *Acadiana Catholic* as a service to the Bishop, clergy, religious, and laity of the Diocese of Lafayette. These pages may be printed directly from the website, free of charge. Errors may be reported by email to smartin@diolaf.org

ALPHABETICAL LISTINGS OF DIOCESAN CENTRAL OFFICES

*A complete listing of personnel and contact information for each department is provided on the indicated page.

Acadiana Catholic..... 3
 Accounting..... 5
 Archives/Research & Information 3
 Auxiliary Services 6
 Bishop’s Office..... 2
 Black Catholic Ministries 4
 Building/Grounds Manager 6
 Building/Renovation..... 6
 Catholic Schools/Food & Nutrition 3
 Catholic Social Services 4
 Chancellor..... 2
 Christian Formation/Religious Education 3
 Community Development..... 6
 Development (BSA) 6
 Diocese of Lafayette (general information)..... 2
 Financial Affairs 6
 Finance Officer 2
 Hispanic Ministry 4
 Human Resources 3
 Information Technology 6
 Justice & Peace 4
 Marriage & Family Life..... 4
 Migration & Refugee Services 4
 Minister to Priests 5
 Ongoing Formation of Priests..... 5
 Parish Finance..... 6
 Permanent Deacons 5
 Persons with Disabilities (DAC)..... 5
 Priests’ Insurance & Retirement 6
 Pro-Life Issues 3
 Property/Liability Insurance 6
 Radio/TV Ministry..... 3
 Religious Brothers & Sisters..... 5
 Safe Environment 4
 Tribunal..... 2
 Vicar for Priests 5
 Vicar General..... 2
 Victim Assistance Coordinator 2
 Vietnamese Catholic Ministries..... 5
 Vocations/Seminarians 5
 Worship..... 5
 Youth Ministry/Project Wellsprings 4

DIOCESE OF LAFAYETTE CENTRAL OFFICE DIRECTORY

Diocese of Lafayette, 1408 Carmel Drive, Lafayette, LA 70501-5298 337-261-5500
Barbara Batiste, Receptionist (bbatiste@diolaf.org)337-261-5652
Cathy Bourque, Receptionist (cbourque@diolaf.org)337-261-5500
Executive Administration FAX Number337-261-5603
Web page: www.diolaf.org

CORRESPONDENCE FOR THE EXECUTIVE OFFICES, TRIBUNAL, DEVELOPMENT, AND FINANCIAL AFFAIRS SHOULD BE ADDRESSED TO: **P.O. BOX 3387, LAFAYETTE, LA 70502.**

CORRESPONDENCE FOR ALL OTHER OFFICES SHOULD BE ADDRESSED TO:
1408 CARMEL DRIVE, LAFAYETTE, LA 70501.

EXECUTIVE OFFICES

BISHOP337-261-5614
FAX337-261-5603
MOST REV. MICHAEL JARRELL, D.D.
Marian Bourque, Executive Secretary to Bishop Jarrell (mbourque@diolaf.org)

VICAR GENERAL
FAX337-261-5603
VERY REV. MSGR. H. ALEXANDRE LARROQUE, JCD, VG (hal@diolaf.org)
VERY REV. CURTIS MALLET, JCL, VG (wcmallet@diolaf.org)
Sophie Thompson, Secretary (sthompson@diolaf.org)337-261-5613
Betty Bias, Secretary/Confirmation Coordinator (bbias@diolaf.org)337-261-5536

CHANCELLOR337-261-5611
FAX337-261-5603
VERY REV. MSGR. RUSSELL J. HARRINGTON, VE (rharrington@diolaf.org)
Eleanor Bourgeois, Secretary (ebourgeois@diolaf.org)

FINANCE OFFICER.....337-735-9420
DEACON JEFF TRUMPS (jtrumps@diolaf.org)
Jeannine Reynolds, Administrative Assistant (jreynolds@diolaf.org)337-261-5632

VICTIM ASSISTANCE COORDINATOR.....337-237-0036
CARMER FALGOUT, RN, MSW, LCSW, BCD
100 Coulee Shore Drive
Lafayette, LA 70503

TRIBUNAL

MODERATOR337-261-5623
After Hours (Clergy Only)337-288-6709
FAX**337-261-5646**
Very Rev. Msgr. Robie E. Robichaux, JCL, Judicial Vicar (rrobichaux@diolaf.org)
Linda Savoy, Secretary (lsavoy@diolaf.org)

SECRETARIAT OF COMMUNITY SERVICES

DIRECTOR337-261-5526
Maureen Fontenot (mfontenot@diolaf.org)

ACADIANA CATHOLIC

FAX337-261-5560
Deacon Thomas Sommers, Editor (tsommers@diolaf.org)337-261-5513
Patrick Breaux, Business Manager (pat@breaux.com)337-261-5518
Stephanie Martin, Staff Writer (smartin@diolaf.org)337-261-5512

ARCHIVES/RESEARCH AND INFORMATION

FAX337-261-5508
Barbara DeJean, Archivist (bdejean@diolaf.org)337-261-5639
Candace Brunet, Associate Archivist (cbrunet@diolaf.org)337-261-5667

CATHOLIC SCHOOLS337-261-5529

FAX337-261-5572
Anna Larriviere, Superintendent (alarriviere@diolaf.org)337-261-5529
Dr. Nancy Ehret, Asst. Superintendent, Curriculum and Development
(curriculum@dioceselafayette-la.org)337-261-5569
Margo Croft, Asst. Superintendent, Technology
(technology@diocese-lafayette-la.org)337-261-5570
Effie Hernandez, Administrative Assistant (ehernandez@diolaf.org)337-261-5568
Anna Stutes, Secretary (astutes@diolaf.org)337-261-5529

FOOD & NUTRITION337-837-5921

FAX337-837-4919

210 Old Farm Lane, Broussard, LA 70518

Angela Broussard, MA, LDN, RD, Director (Ext. 200) abroussard@fns-dol.org
Cathy Stutes, Assistant Director (Ext. 206) cstutes@fns-dol.org
Lizzy Livings, Area Manager (Ext. 207) llivings@fns-dol.org
Pennye McKee, Personnel Coordinator/Payroll (Ext. 203) pmckee@fns-dol.org
Fred Noel, Area Manager (Ext. 202) fnoel@fns-dol.org
Sandra Breaux, Area Manager (Ext. 211) sbreaux@fns-dol.org
Bobby Jumonville, Warehouse Manager (Ext. 209)
Darrel Meche, Warehouse Technician (Ext. 208)

CHRISTIAN FORMATION/RELIGIOUS EDUCATION337-261-5550

FAX337-261-5680
Ann Broussard, Director (abroussard@diolaf.org)337-261-5550
Sue Aymond, Secretary/Extension Society Calendars (saymond@diolaf.org)
.....337-261-5550
John Schexnaildre, RCIA Consultant (jschexnaildre@diolaf.org)337-261-5674
Marie Chaisson, Secretary (mchaisson@diolaf.org)337-261-5555
Lynne Broussard, A-V Librarian/Secretary (lbroussard@diolaf.org)337-261-5674

HUMAN RESOURCES337-261-5526

FAX337-261-5563
Maureen Fontenot, Director (mfontenot@diolaf.org)
Theresa S. Theall, Secretary (ttheall@diolaf.org)

PRO-LIFE ISSUES337-261-5607

FAX337-261-5560
Karol Meynard, Director (kmeynard@diolaf.org)
Trista Littell, Secretary (tlittell@diolaf.org)

RADIO/TV MINISTRY337-261-5626

David Mergist, Producer/Director (dmergist@diolaf.org)
**To submit photos, PDF files & other visuals, e-mail to: dolrtv@hotmail.com*

SAFE ENVIRONMENT	337-735-9434
FAX	337-261-5563
Lisa Frederick, Safe Environment Clerk (lfrederick@diolaf.org)	
YOUTH MINISTRY/PROJECT WELLSPRINGS	337-261-5551
FAX	337-261-5556
Rosie Brown, Director (rbrown@diolaf.org)	
Eugene Thibodeaux, Project Wellsprings Coordinator (wellsprings@diolaf.org)	
Vickie Vincent, Secretary (vlvincent@diolaf.org)	
Emily Marcantel, Intern (emarcantel@diolaf.org)	
SECRETARIAT OF PASTORAL SERVICES	
DIRECTOR	337-735-9433
Deacon Jim Kincel (jkincel@diolaf.org)	
BLACK CATHOLIC MINISTRIES	337-261-5694
FAX	337-261-5635
Stephanie Bernard, Director (sbernard@diolaf.org)	
CATHOLIC SOCIAL SERVICES	337-261-5654
Paula Milner, Director (pmilner@diolaf.org)	
Paulette DeLatin, Social Worker (pdelatin@diolaf.org)	
Willa Blackwell, Social Worker (wblackwell@diolaf.org)	
Mary Adams, Office Manager (madams@diolaf.org)	
HISPANIC MINISTRY	337-261-5544
FAX	337-261-5506
Cristina LeBlanc, Director (cleblanc@diolaf.org)	
Rev. Jairo Castaño, SDS, Pastoral Coordinator (jcastano@diolaf.org)	
Emily Byers, Administrative Assistant (ebyers@diolaf.org)	
JUSTICE & PEACE	337-261-5545
FAX	337-261-5556
COMMISSION FOR PASTORAL CARE OF ELDERLY	
PRISON MINISTRY (Wilbur “Chubby” Hegger, Coordinator for Lafayette Civil Parish)	
Ed Boustany, Director (eboustany@diolaf.org)	
Sally Segura, Secretary (ssegura@diolaf.org)	
MARRIAGE & FAMILY LIFE	337-261-5653
FAX	337-735-9442
Rev. Jude Halphen, PhD, Director (jhalphen@diolaf.org)	
Mary-Rose Verret, Programs Coordinator (mverret@diolaf.org)	
Kelley Chapman, Secretary (kchapman@diolaf.org)	
MIGRATION & REFUGEE SERVICES	337-261-5535
FAX	337-261-5539
Tina Quesada, Director (tquesada@diolaf.org)	
Johnny Nguyen, Resettlement Coordinator (jnguyen@diolaf.org)	
Margaret Obafunwa, Bi-Lingual Case Manager (mobafunwa@diolaf.org)	
Ana Gamboa, Bi-Lingual Case Manager (agamboa@diolaf.org)	
Grace Dinh, Office Manager (gdinh@diolaf.org)	

PERSONS WITH DISABILITIES337-261-5548
 Deaf Action Center337-232-3463
FAX**337-233-1916**
 Myra Mouton, Director (mmouton@diolaf.org)
 Julie Caillouet, Office Manager (jcaillouet@diolaf.org)
 Glynis Kibodeaux, Receptionist (gkibodeaux@diolaf.org)
 Monique Mouton, TTY Coordinator
 Polly Bertrand, Interpreter (pdonellan@diolaf.org)

VIETNAMESE CATHOLIC MINISTRIES.....**337-828-1714**
 Rev. Thomas H. Vu

WORSHIP.....337-261-5554
FAX**337-261-5635**
 Very Rev. Msgr. Keith J. DeRouen, Director
 Faye Drobic, Assistant to Director (fdrobic@diolaf.org)
 Darlene Savoy, Secretary (dsavoy@diolaf.org).....337-261-5505

SECRETARIAT OF RELIGIOUS PERSONNEL

DIRECTOR337-261-5611
 Very Rev. Msgr. Russell J. Harrington, VE (rharrington@diolaf.org)

MINISTER TO PRIESTS337-234-9054
 Rev. Michael Guidry

ONGOING FORMATION OF PRIESTS.....337-334-5056
 Rev. Kevin Bordelon

PERMANENT DEACONS.....337-735-9433
FAX337-261-5635
 Deacon Jim Kincel, Director (jkincel@diolaf.org)
 Brenda Menard, Secretary (bmenard@diolaf.org)

RELIGIOUS BROTHERS & SISTERS337-735-9430
 Sister Judith Coreil, MSC, Director (jcoreil@diolaf.org)

VICAR FOR PRIESTS.....337-261-5611
 Very Rev. Msgr. Russell J. Harrington, VE (rharrington@diolaf.org)

VOCATIONS/SEMINARIANS337-261-5690
FAX**337-261-5635**
 Rev. Aaron Melancon, Director (amelancon@diolaf.org)
 Betty Trahan, Secretary (btrahan@diolaf.org)

SECRETARIAT OF STEWARDSHIP

DIRECTOR337-735-9420
 Deacon Jeff Trumps (jtrumps@diolaf.org)

ACCOUNTING

Tom Landry, Controller (tlandry@diolaf.org).....337-261-5627
 Mona Credeur, Accounting Clerk (mcredeur@diolaf.org)337-261-5643
 Flo Carroll, Clerk (fcarroll@diolaf.org)337-261-5628

AUXILIARY SERVICES	337-261-5600
Patsy Arwood, Director (parwood@diolaf.org)	
Linda Griffin, Office Clerk (lgriffin@diolaf.org).....	
	337-261-5601
BUILDING/GROUNDS MANAGER	337-261-5606
Tony Boudreaux, Manager (tboudreaux@diolaf.org)	
	337-654-2736 (Cell)
Bill Parker, Maintenance Coordinator (bparker@diolaf.org)	
Edwin Toaspern, Maintenance	
Eddie Mouton, Maintenance	
Maria Whitaker, Custodian Coordinator	
Eunice Charles, Custodian	
Guillermo Junco, Custodian	
Janelle Landor, Custodian	
BUILDING/RENOVATION	337-735-9429
Al J. Landry, Coordinator (alandry@diolaf.org)	
	337-380-3831 (Cell)
Gerald Gossen, Co-coordinator (ggossen@diolaf.org)	
COMMUNITY DEVELOPMENT	337-261-5650
FAX	337-261-5651
Bernel Fontenot, Director (bfontenot@diolaf.org)	
Connie Lantier, Administrative Assistant (clantier@diolaf.org)	
COOPERATIVE DEPOSIT & LOAN PROGRAM (CDLP)	
FAX	337-261-5645
PHONE	337-261-5643
DEVELOPMENT	337-261-5641
(Stewardship, Bishop’s Services Appeal, Planned Giving)	
Connie Babin, Director (cbabin@diolaf.org)	
Cassie LeBlanc, Administrative Assistant (chleblanc@diolaf.org)	
Mary Batiste, Data Management Specialist (mbatiste@diolaf.org)	
Cindy LeBlanc, Clerk (csleblanc@diolaf.org)	
FINANCIAL AFFAIRS	337-261-5632
Deacon Jeff Trumps, Diocesan Finance Officer (jtrumps@diolaf.org).....	
	337-735-9420
Jeannine Reynolds, Administrative Assistant (jreynolds@diolaf.org)	
INFORMATION TECHNOLOGY	337-261-5516
FAX:	337-261-5503
Rob Stevenson, Director (rstevenson@diolaf.org)	
Jim Cornell (jcornell@diolaf.org)	
PARISH FINANCE	
John Peuler, Internal Auditor/Trainer (jpeuler@diolaf.org)	
	337-735-9436
Juanita Lafleur (jlafleur@diolaf.org)	
	337-261-5631
Debbie Derouen (dderouen@diolaf.org)	
	337-261-5633
Yvette Hebert (yhebert@diolaf.org)	
	337-735-9437
PRIESTS INSURANCE & RETIREMENT	
Beverly Broussard, Administrative Assistant (bbroussard@diolaf.org)	
	337-261-5629
PROPERTY/LIABILITY INSURANCE PROGRAM	
Ryan Fitzgerald, Risk Manager (rfitzgerald@diolaf.org)	
	337-735-9449

DIOCESAN REGIONS

CENTRAL REGION

(Civil Parishes St. Martin & Lafayette)

Very Rev. Thomas James, S.V.D., Episcopal Vicar
P.O. Box 2398
Lafayette, LA 70502-2398
Telephone: 337-235-4618
FAX: 337-235-4775

Mary Bergeron, Executive Assistant
140 Decal Road
Lafayette, LA 70508
337-231-6991 (Office/FAX)
337-654-8682 (Cell Phone)
E-mail: mbergeron@diolaf.org

CHURCH PARISHES BY CITY

BREAUX BRIDGE

St. Bernard
St. Francis of Assisi

BROUSSARD

Sacred Heart
St. Joseph

CARENCRO

Assumption
St. Peter

CECILIA

St. Joseph
St. Rose of Lima

HENDERSON

Our Lady of Mercy

JUDICE

St. Basil

LAFAYETTE

Cathedral of St. John the Evangelist
Holy Cross
Immaculate Heart of Mary
Our Lady of Fatima
Our Lady of Wisdom
Our Lady Queen of Peace
St. Anthony
St. Edmond
St. Elizabeth Seton
St. Genevieve
St. Jules
St. Leo
St. Mary
St. Patrick
St. Paul
St. Pius X

MILTON

St. Joseph

PARKS

St. Joseph

SCOTT

St. Martin de Porres
Sts. Peter & Paul

YOUNGSVILLE

St. Anne

DIOCESAN REGIONS

NORTH REGION

(Civil Parishes St. Landry & Evangeline)

Very Rev. Msgr. J. Robert Romero, Episcopal Vicar
P.O. Box 31
Eunice, LA 70535
Telephone: 337-457-5285
FAX: 337-457-7904

Jacqueline Griffin, Executive Assistant
2125 South Union Street
Opelousas, LA 70570
337-831-2621 (Cell Phone)
337-942-9708 (FAX)
Email: jgriffin@diolaf.org

CHURCH PARISHES BY CITY

ARNAUDVILLE

St. Catherine of Alexandria
St. Francis Regis

BASILE

St. Augustine

CANKTON

St. John Berchmans

CHATAIGNER

Our Lady of Mt. Carmel

DURALDE

Annunciation

EUNICE

St. Anthony of Padua
St. Mathilda
St. Thomas More

GRAND COTEAU

St. Charles Borromeo

GRAND PRAIRIE

St. Peter

KROTZ SPRINGS

St. Anthony of Padua

LAWTELL

Holy Family
St. Bridget

LEBEAU

Immaculate Conception

LEONVILLE

St. Catherine
St. Leo the Great

MALLET

St. Ann

MAMOU

St. Ann

MELVILLE

St. John the Evangelist

MORROW

St. Peter

OPELOUSAS

Holy Ghost
Our Lady of Mercy
Our Lady Queen of Angels
St. Landry

PINE PRAIRIE

St. Peter

PLAISANCE

St. Joseph

PORT BARRE

Sacred Heart
St. Mary

VILLE PLATTE

Our Lady Queen of All Saints
Sacred Heart of Jesus
St. Joseph

WASHINGTON

Holy Trinity
Immaculate Conception

DIOCESAN REGIONS

SOUTH REGION

(Civil Parishes St. Mary, St. Martin & Iberia)

Very Rev. Msgr. Richard R. Greene, Episcopal Vicar

2514 Old Jeanerette Road
New Iberia, LA 70563
Telephone: 337-364-4439
FAX: 337-364-4474

Deacon Gerald Bourg, Executive Assistant

P.O. Box 573
Baldwin, LA 70514-0573
337-578-2423 (Cell Phone)
337-395-9129 or 337-923-4966 (FAX)
Email: gbourg@diolaf.org

CHURCH PARISHES BY CITY

BALDWIN

Sacred Heart of Jesus

BAYOU VISTA

St. Bernadette

BERWICK

St. Stephen

CATAHOULA

St. Rita

CENTERVILLE

St. Joseph

CHARENTON

Immaculate Conception

COTEAU

Our Lady of Prompt Succor

COTEAU HOLMES

St. Elizabeth

FOUR CORNERS

St. Peter the Apostle

FRANKLIN

Assumption

St. Jules

JEANERETTE

Our Lady of the Rosary

St. John the Evangelist

LOREAUVILLE

Our Lady of Victory

St. Joseph

LOUISA

St. Helena

LYDIA

St. Nicholas

NEW IBERIA

Nativity of Our Lady

Our Lady of Perpetual Help

Sacred Heart of Jesus

St. Edward

St. Peter

PATTERSON

St. Joseph

RYNELLA

St. Marcellus

ST. MARTINVILLE

Notre Dame

St. Martin de Tours

DIOCESAN REGIONS

WEST REGION

(Civil Parishes Vermilion, Acadia & Lafayette)

Very Rev. Msgr. Jefferson DeBlanc, Episcopal Vicar

P.O. Box 403

Church Point, LA 70525

Telephone: 337-684-5494

FAX: 337-684-5494

Janeth Harrington, Executive Assistant

P.O. Box 51715

Lafayette, LA 70505

337-232-3323 (Office/FAX)

337-258-0073 (Cell Phone)

Email: jharrington@diolaf.org

CHURCH PARISHES BY CITY

ABBEVILLE

St. Mary Magdalen

St. Theresa of the Child Jesus

CHURCH POINT

Our Lady of the Sacred Heart

Our Mother of Mercy

COW ISLAND

St. Anne

CROWLEY

Immaculate Heart of Mary

St. Michael the Archangel

St. Theresa of Avila

DELCAMBRE

Our Lady of the Lake

St. Martin de Porres

DUSON

St. Benedict the Moor

St. Theresa of the Child Jesus

ERATH

Our Lady of Lourdes

EVANGELINE

St. Joseph

GUEYDAN

St. Peter the Apostle

HENRY

St. John

IOTA

St. Joseph

KAPLAN

Our Lady of the Holy Rosary

LEROY

Our Lady of Perpetual Help

LYONS POINT

St. John the Baptist

MAURICE

St. Alphonsus

St. Joseph

MERMENTAU

St. John the Evangelist

MIRE

Assumption of the Blessed Virgin Mary

MORSE

Immaculate Conception

MOWATA

St. Lawrence

RAYNE

Our Mother of Mercy

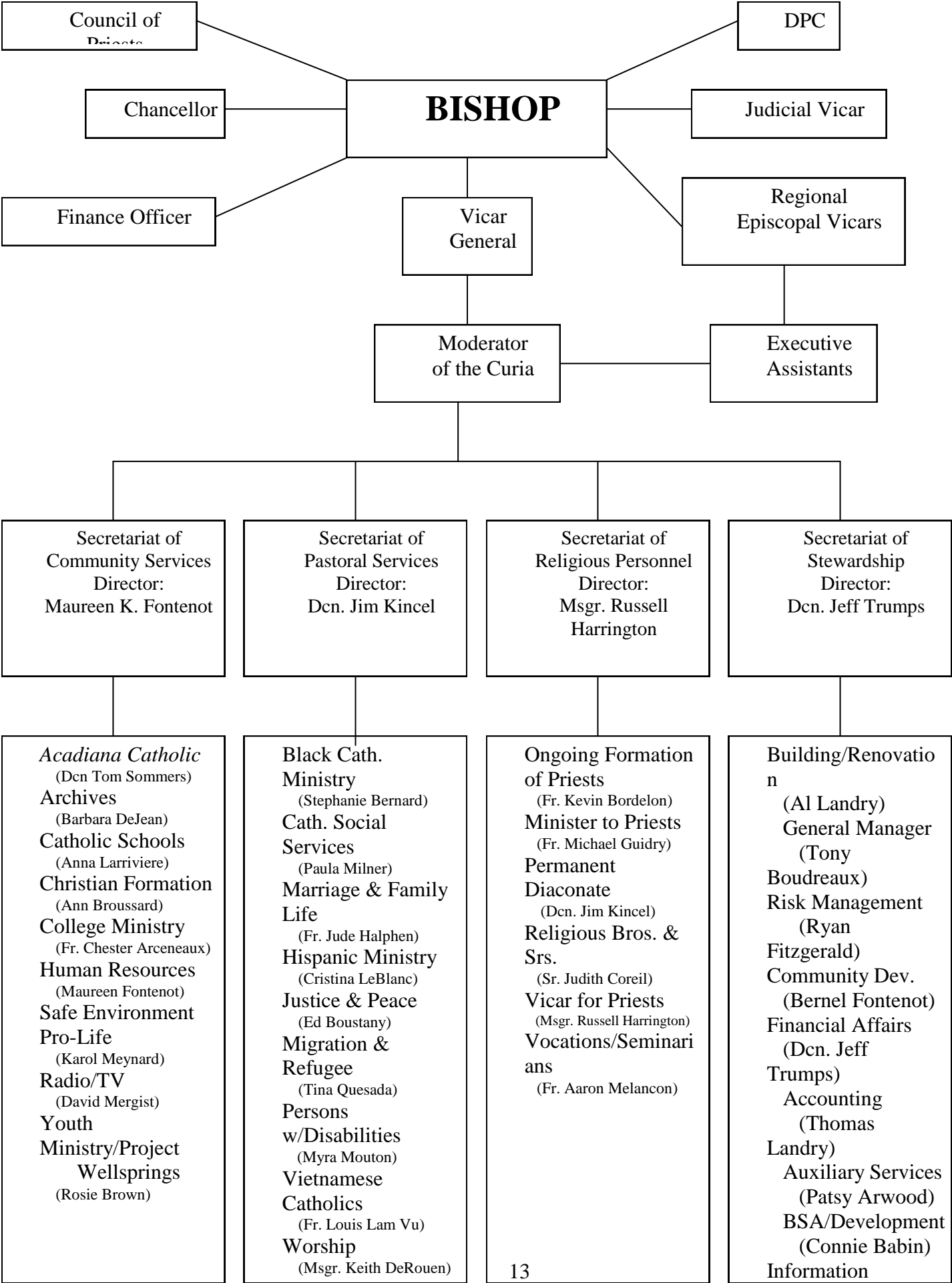
St. Joseph

RICHARD

St. Edward

ROBERTS COVE

St. Leo the IV





Present Ordinary

The Most Reverend Michael Jarrell, D.D., ordained June 3, 1967; ordained to the episcopacy and installed as second Bishop of Houma-Thibodaux March 4, 1993; appointed sixth Bishop of Lafayette November 8, 2002 and installed December 18, 2002.

Former Ordinaries

The Most Reverend Edward J. O'Donnell, D.D., ordained April 6, 1957; appointed Titular Bishop of Britonia and Auxiliary Bishop of St. Louis December 6, 1983; consecrated February 10, 1984; appointed fifth Bishop of Lafayette November 8, 1994; installed December 16, 1994; retired November 8, 2002; died February 1, 2009.

The Most Reverend Harry J. Flynn, D.D., ordained May 29, 1960; appointed Coadjutor Bishop of Lafayette April 19, 1986; consecrated June 24, 1986; presented Papal Credentials, St. John Cathedral, Lafayette, June 29, 1986; Fourth Bishop of Lafayette May 13, 1989; appointed Coadjutor Archbishop of St. Paul-Minneapolis February 22, 1994; installed April 27, 1994.

The Most Reverend Gerard L. Frey, D.D., ordained April 2, 1938; appointed Bishop of Savannah May 31, 1967; consecrated August 8, 1967; installed August 10, 1967; appointed third Bishop of Lafayette November 7, 1972; installed January 7, 1973; retired May 13, 1989; died August 16, 2007.

The Most Reverend Maurice Schexnayder, D.D., ordained April 11, 1925; appointed Titular Bishop of Tuscamia and Auxiliary to the Bishop of Lafayette December 2, 1950; consecrated February 22, 1951; appointed second Bishop of Lafayette March 13, 1956; installed May 24, 1956; retired November 7, 1972; died January 23, 1981.

The Most Reverend Jules B. Jeanmard, D.D., ordained June 10, 1903; appointed first Bishop of Lafayette; consecrated December 8, 1918; installed December 12, 1918; appointed assistant at the Pontifical Throne December 8, 1943; retired and named Titular Bishop of Baretta March 13, 1956; died February 23, 1957.

Dioceses of Louisiana

Archdiocese of New Orleans (established 1793). Comprises eight civil parishes. Ordinary: Most Rev. Gregory M. Aymond., 7887 Walmsley Avenue, New Orleans, LA 70125-3496. Phone (504) 861-9521. FAX (504) 866-2906. Website: www.arch-no.org. Email: pservices@archdiocese-no.org.

Diocese of Alexandria (established as Diocese of Natchitoches 1853; transferred to Alexandria 1910; re-designated Diocese of Alexandria 1977; re-established 1986). Comprises thirteen civil parishes. Ordinary: Most Rev. Ronald P. Herzog, 4400 Coliseum Blvd., Alexandria, LA 71303. Phone (318) 445-2401. FAX (318) 448-6121. Website: www.diocesealex.org. E-mail: info@diocesealex.org.

Diocese of Lafayette (established 1918). Comprises eight civil parishes. Ordinary: Most Rev. C. Michael Jarrell, D.D., 1408 Carmel Drive, P.O. Box 3387, Lafayette, LA 70502-3387. Phone (337) 261-5500. FAX (337) 261-5635. Website: www.diolaif.org

Diocese of Baton Rouge (established 1961). Comprises twelve civil parishes. Ordinary: Most Rev. Robert W. Muench, DD, 1800 South Acadian Thruway, P.O. Box 2028, Baton Rouge, LA 70821-2028. Phone (225) 387-0561. FAX (225) 336-8789. Website: www.diobr.org. Email: chancery@diobr.org.

Diocese of Houma-Thibodaux (established 1977). Comprises two civil parishes. Ordinary: Most Rev. Sam G. Jacobs, D.D., P.O. Box 505, Hwy 311, Shriever, LA 70395. Phone (985) 868-7720. FAX (985) 868-7727.

Diocese of Lake Charles (established 1980). Comprises five civil parishes. Ordinary: Most Rev. Glen Provost, D.D., P.O. Box 3223, Lake Charles, LA 70602-3223. Phone (337) 439-7400. FAX (337) 439-7428.

Diocese of Shreveport (established 1986). Comprises sixteen civil parishes. Diocesan Administrator: Very Rev. Earl Provenza, 3500 Fairfield Ave., Shreveport, LA 71104. Phone: Toll Free 1-800-256-1542; (318) 868-4441. FAX (318) 868-4605.